



DEVELOPMENT PERMIT NO. DP001003

ICS WEAR GROUP INC
Name of Owner(s) of Land (Permittee)

1180 MAUGHAN ROAD
Civic Address

1. This development permit is issued subject to compliance with all of the bylaws of the municipality applicable thereto, except as specifically varied or supplemented by this permit.
2. This development permit applies to and only to those lands within the municipality described below, and any and all building structures and other developments thereon:

Legal Description:

LOT 1, SECTION 1, RANGE 8, NANAIMO DISTRICT, PLAN VIP63717

PID No. 023-493-178

3. The land described herein shall be developed strictly in accordance with the following terms and conditions and provisions of this permit and any plans and specifications hereto which shall form a part thereof.

Schedule A Location Plan

Schedule B Site Plan

Schedule C Building Elevations

Schedule D Landscape Plan

- a) If the applicant does not substantially commence the development permitted by this permit within two years of the date of this permit, the permit shall lapse.

4. This permit is not a building permit nor does it constitute approval of any signage. Separate applications must be made for a building permit and sign permit.

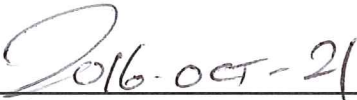
5. The City of Nanaimo "ZONING BYLAW 2011 NO. 4500" is varied as follows:

Section 17.11 – Minimum Landscape Treatment Levels

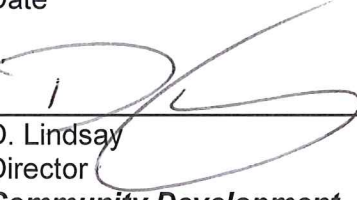
Minimum Landscape Level 1c (Wave Place)

The Minimum Landscape Level 1c requires 6 trees along the Wave Place property frontage. One tree is provided, a variance of 5 trees.

REVIEWED AND APPROVED ON



Date



D. Lindsay
Director

Community Development

Pursuant to Section 154 (1)(b) of the Community Charter

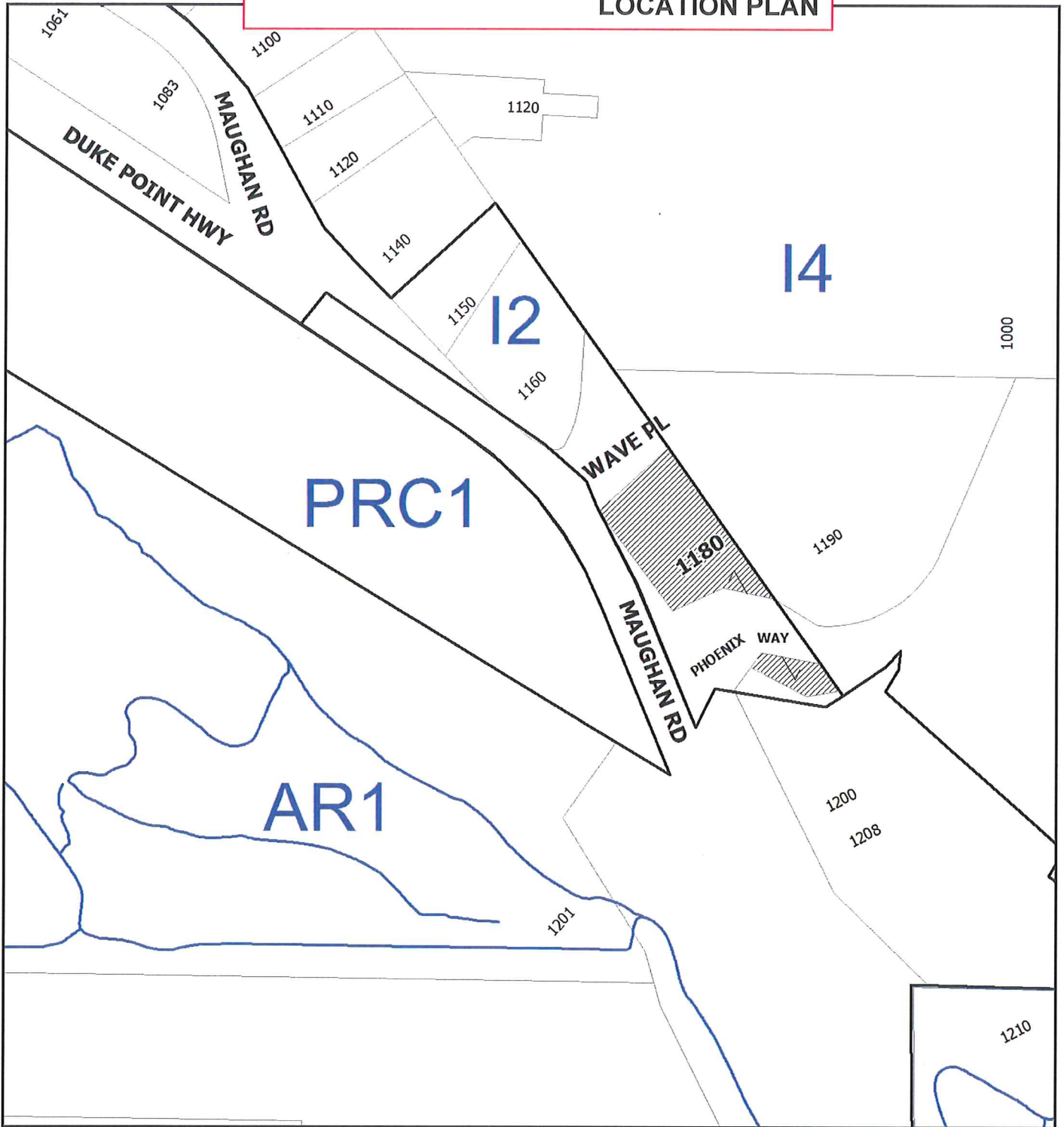
TR/ln

Prospero attachment: DP001003

Development Permit DP001003
1180 Maughan Road

Schedule A

LOCATION PLAN



DEVELOPMENT PERMIT NO. DP001003

LOCATION PLAN

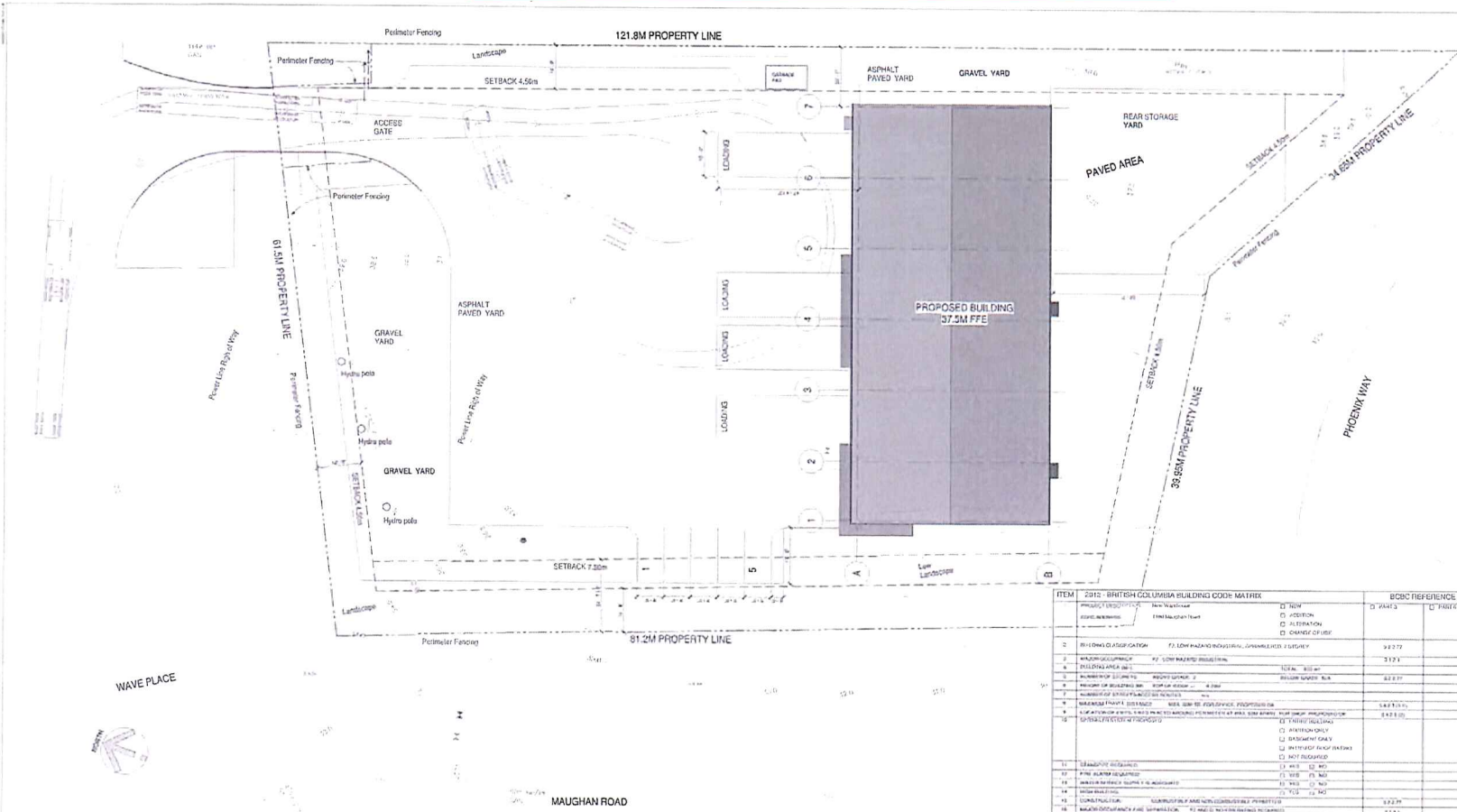
Civic: 1180 Maughan Road
Lot 1, Section 1, Range 8,
Nanaimo District, Plan VIP63717

 **Subject Property**



Development Permit DP001003
1180 Maughan Road

Schedule B
SITE PLAN



ISSUES	
NO.	DESCRIPTION
1	RESUBMIT LEGAL DEVELOPMENT PLAN

MAUGHAN AND WAVE PLACE INDUSTRIAL

"SIC" Map 2013-01-01

HEROLD ENGINEERING
7700 E. Commercial Ave. #101, Suite 101
Edmonton, Alberta T6C 1K5
Phone: 780-443-8888
Fax: 780-443-8889
www.heroldengineering.com

Site Plan

DESIGNED BY: [Signature]

DATE: 2016-09-01

PROJECT NO: 0022-003

SCALE: As indicated

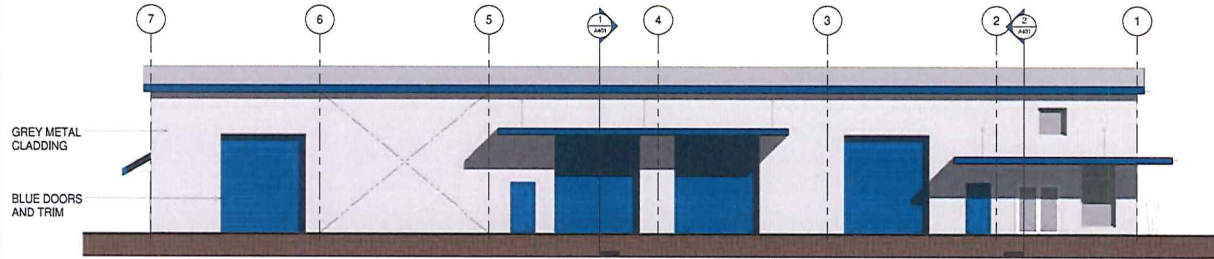
A101

PROJECT DATA	
LEGAL ADDRESS:	LOT 4, SECTION 28 RANGE 4, TOWNSHIP 53, RANGE 12, PLAN 1000017
CIVIC ADDRESS:	1180 Maughan Road, Edmonton, AB
CD-MS:	10
APPLICANT:	DMGP 7800 5017 (2) BNS MWH OFFICE 1200 5017 (2) BNS MWH OFFICE 1200 5017 (2) BNS
COVERAGES:	Max 40% Coverage Allowed & 400 sqm (1067 sq ft) Max 40% Coverage Proposed
MAX HEIGHT:	Max 10m
SETBACKS:	Front 2.0m, Side 1.0m, Rear 1.0m, 4.0m, 4.0m, 4.0m
PARKING:	1 Spot per 250 sqm + 1 Spot per 100 sqm = 3 Spots

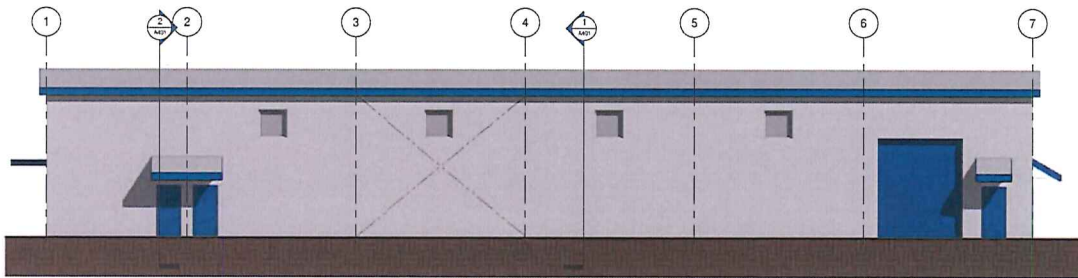
ITEM	2015 - BRITISH COLUMBIA BUILDING CODE MATRIX	BOBC REFERENCE
1	PROJECT TYPE: New Building	1) TRIM 2) POSITION 3) ALTERNATION 4) CHANGE OF USE
2	REVISIONS/DESCRIPTION	1) 2015 2) 2015
3	APPROXIMATE OCCUPANCY	1) 2015
4	FLOORING AREA (sq. m)	1) 2015
5	NUMBER OF FLOORS	1) 2015
6	HEIGHT OF BUILDING (m)	1) 2015
7	NUMBER OF STORIES ABOVE GROUND	1) 2015
8	BASEMENT FLOOR FINISH	1) 2015
9	ALTERNATIVE FINISH	1) 2015
10	BASEMENT FLOOR FINISH	1) 2015
11	BASEMENT FLOOR FINISH	1) 2015
12	BASEMENT FLOOR FINISH	1) 2015
13	BASEMENT FLOOR FINISH	1) 2015
14	BASEMENT FLOOR FINISH	1) 2015
15	BASEMENT FLOOR FINISH	1) 2015
16	BASEMENT FLOOR FINISH	1) 2015
17	BASEMENT FLOOR FINISH	1) 2015
18	BASEMENT FLOOR FINISH	1) 2015
19	BASEMENT FLOOR FINISH	1) 2015
20	BASEMENT FLOOR FINISH	1) 2015
21	BASEMENT FLOOR FINISH	1) 2015
22	BASEMENT FLOOR FINISH	1) 2015
23	BASEMENT FLOOR FINISH	1) 2015
24	BASEMENT FLOOR FINISH	1) 2015
25	BASEMENT FLOOR FINISH	1) 2015
26	BASEMENT FLOOR FINISH	1) 2015
27	BASEMENT FLOOR FINISH	1) 2015
28	BASEMENT FLOOR FINISH	1) 2015
29	BASEMENT FLOOR FINISH	1) 2015
30	BASEMENT FLOOR FINISH	1) 2015
31	BASEMENT FLOOR FINISH	1) 2015
32	BASEMENT FLOOR FINISH	1) 2015
33	BASEMENT FLOOR FINISH	1) 2015
34	BASEMENT FLOOR FINISH	1) 2015
35	BASEMENT FLOOR FINISH	1) 2015
36	BASEMENT FLOOR FINISH	1) 2015
37	BASEMENT FLOOR FINISH	1) 2015
38	BASEMENT FLOOR FINISH	1) 2015
39	BASEMENT FLOOR FINISH	1) 2015
40	BASEMENT FLOOR FINISH	1) 2015
41	BASEMENT FLOOR FINISH	1) 2015
42	BASEMENT FLOOR FINISH	1) 2015
43	BASEMENT FLOOR FINISH	1) 2015
44	BASEMENT FLOOR FINISH	1) 2015
45	BASEMENT FLOOR FINISH	1) 2015
46	BASEMENT FLOOR FINISH	1) 2015
47	BASEMENT FLOOR FINISH	1) 2015
48	BASEMENT FLOOR FINISH	1) 2015
49	BASEMENT FLOOR FINISH	1) 2015
50	BASEMENT FLOOR FINISH	1) 2015
51	BASEMENT FLOOR FINISH	1) 2015
52	BASEMENT FLOOR FINISH	1) 2015
53	BASEMENT FLOOR FINISH	1) 2015
54	BASEMENT FLOOR FINISH	1) 2015
55	BASEMENT FLOOR FINISH	1) 2015
56	BASEMENT FLOOR FINISH	1) 2015
57	BASEMENT FLOOR FINISH	1) 2015
58	BASEMENT FLOOR FINISH	1) 2015
59	BASEMENT FLOOR FINISH	1) 2015
60	BASEMENT FLOOR FINISH	1) 2015
61	BASEMENT FLOOR FINISH	1) 2015
62	BASEMENT FLOOR FINISH	1) 2015
63	BASEMENT FLOOR FINISH	1) 2015
64	BASEMENT FLOOR FINISH	1) 2015
65	BASEMENT FLOOR FINISH	1) 2015
66	BASEMENT FLOOR FINISH	1) 2015
67	BASEMENT FLOOR FINISH	1) 2015
68	BASEMENT FLOOR FINISH	1) 2015
69	BASEMENT FLOOR FINISH	1) 2015
70	BASEMENT FLOOR FINISH	1) 2015
71	BASEMENT FLOOR FINISH	1) 2015
72	BASEMENT FLOOR FINISH	1) 2015
73	BASEMENT FLOOR FINISH	1) 2015
74	BASEMENT FLOOR FINISH	1) 2015
75	BASEMENT FLOOR FINISH	1) 2015
76	BASEMENT FLOOR FINISH	1) 2015
77	BASEMENT FLOOR FINISH	1) 2015
78	BASEMENT FLOOR FINISH	1) 2015
79	BASEMENT FLOOR FINISH	1) 2015
80	BASEMENT FLOOR FINISH	1) 2015
81	BASEMENT FLOOR FINISH	1) 2015
82	BASEMENT FLOOR FINISH	1) 2015
83	BASEMENT FLOOR FINISH	1) 2015
84	BASEMENT FLOOR FINISH	1) 2015
85	BASEMENT FLOOR FINISH	1) 2015
86	BASEMENT FLOOR FINISH	1) 2015
87	BASEMENT FLOOR FINISH	1) 2015
88	BASEMENT FLOOR FINISH	1) 2015
89	BASEMENT FLOOR FINISH	1) 2015
90	BASEMENT FLOOR FINISH	1) 2015
91	BASEMENT FLOOR FINISH	1) 2015
92	BASEMENT FLOOR FINISH	1) 2015
93	BASEMENT FLOOR FINISH	1) 2015
94	BASEMENT FLOOR FINISH	1) 2015
95	BASEMENT FLOOR FINISH	1) 2015
96	BASEMENT FLOOR FINISH	1) 2015
97	BASEMENT FLOOR FINISH	1) 2015
98	BASEMENT FLOOR FINISH	1) 2015
99	BASEMENT FLOOR FINISH	1) 2015
100	BASEMENT FLOOR FINISH	1) 2015

RECEIVED
Current Planning
2016-SEP-01

BUILDING ELEVATIONS



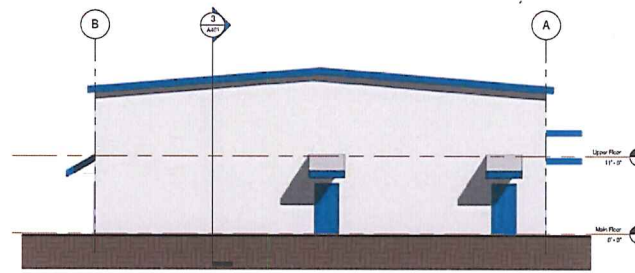
1 Wave Place Elevation
1/8" = 1'-0"



2 Phoenix Way Elevation
1/8" = 1'-0"



3 Maughan Road Elevation
1/8" = 1'-0"



4 Rear Elevation
1/8" = 1'-0"



GREY METAL ENGINEERED BUILDING CLADDING



BLUE METAL OVERHEAD DOORS
(MAN DOORS AND TRIM TO MATCH)

ISSUES	
NO.	DATE - ISSUE FOR
1	2010-06-08 ISSUES FOR DEVELOPMENT PERMIT

DATE CONSULTANT

MAUGHAN AND WAVE PLACE INDUSTRIAL
1180 Maughan Road, NANAIMO BC

HEROLD ENGINEERING
3701 Gleneden Hill, Nanaimo, BC V9T 2W1
T: 250 751 8554 F: 250 751 8559
E: herold@herold-engineering.com

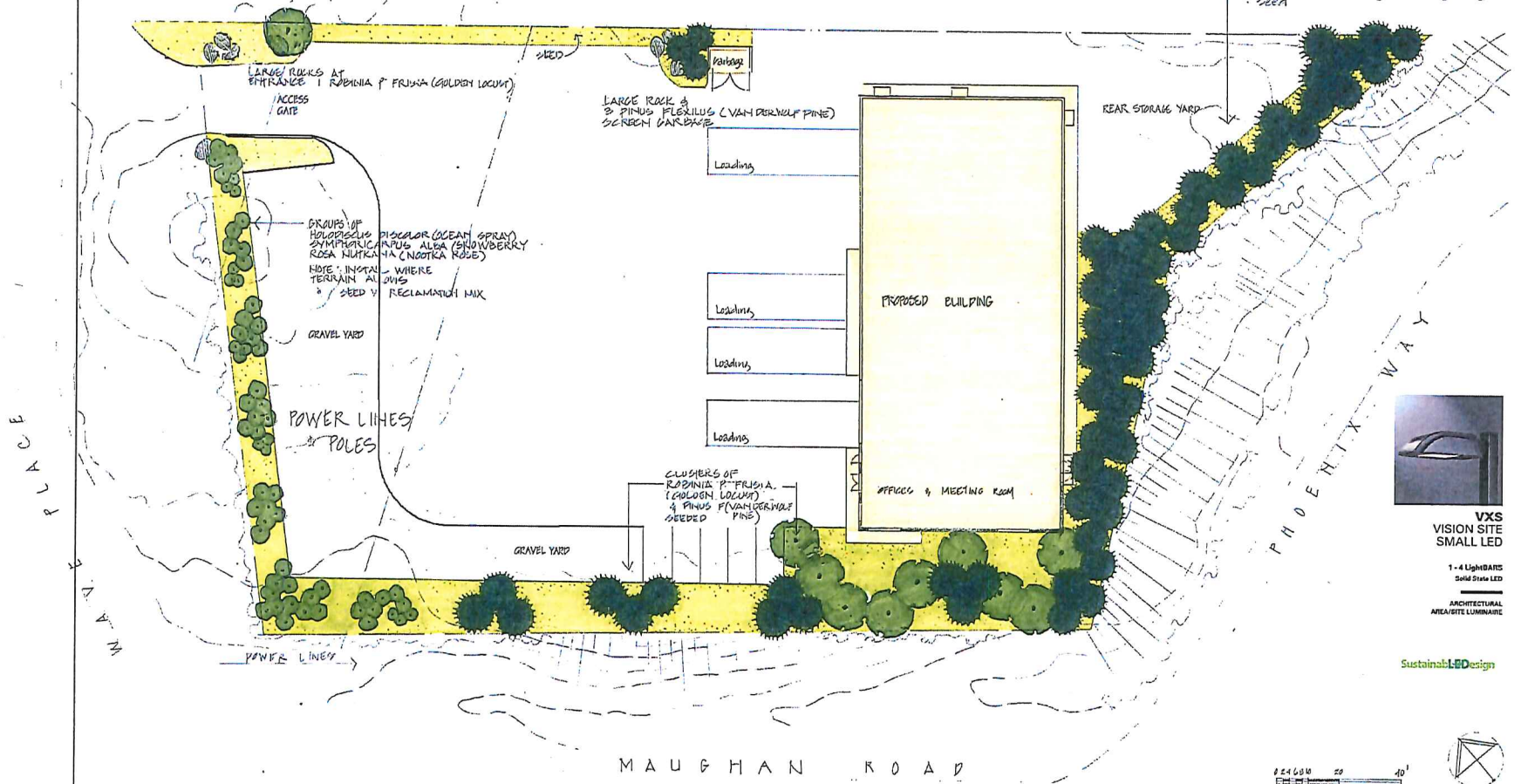
Elevations	
DESIGNED	REAL
DESIGN REVIEW	
DRAWN	DM
DRAWING REVIEW	
PROJECT NO.	P16-4078
CLIENT	MAUGHAN AND WAVE PLACE
SCALE	As Indicated
PERMIT NO.	
NO. DRAWINGS	AS01 OF
REVISION	

RECEIVED
Current Planning
2010-JUN-08

LANDSCAPE PLAN

notes:

- 1.0 Perimeter fencing to be 8'-0" high chain link with a gated entrance.
- 2.0 Site lighting to be Cooper Lighting VXS VISION SITE SMALL LED, see detail on this sheet.
- 3.0 A rain garden, if required, will be installed along the South-West property line in coordination with the Civil Engineer.
- 4.0 An invasive plant removal management plan will be included on the Building Permit drawings.
- 5.0 An irrigation system will be installed.



VXS VISION SITE SMALL LED

1 - 4 LightBARS Solid State LED

ARCHITECTURAL AREA/SITE LUMINAIRE

SustainabLEDesign



REV	DESCRIPTION

VICTORIA PEARET CRO
LANDSCAPEARCHITECT
235 Pine St. Nanaimo,
B.C. V9R 2B6
250-754-4335
victoria@stred.net

PROJECT
MAUGHAN + WAVE
PLACE INDUSTRIAL
1180 MAUGHAN ROAD
NANAIMO BC
SHEET TITLE
CONCEPTUAL
LANDSCAPE
PLAN

SCALE 1/8" = 1'-0" DATE 12.05.16
DRAWN VJD CHECKED
PROJECT NUMBER Maughan Rd/16
DRAWING NUMBER 11